

2021

CORPORATE SOCIAL
RESPONSIBILITY REPORT



CONTENTS

/02
/03

/04

/14

/30

/37





2009

2010

2015



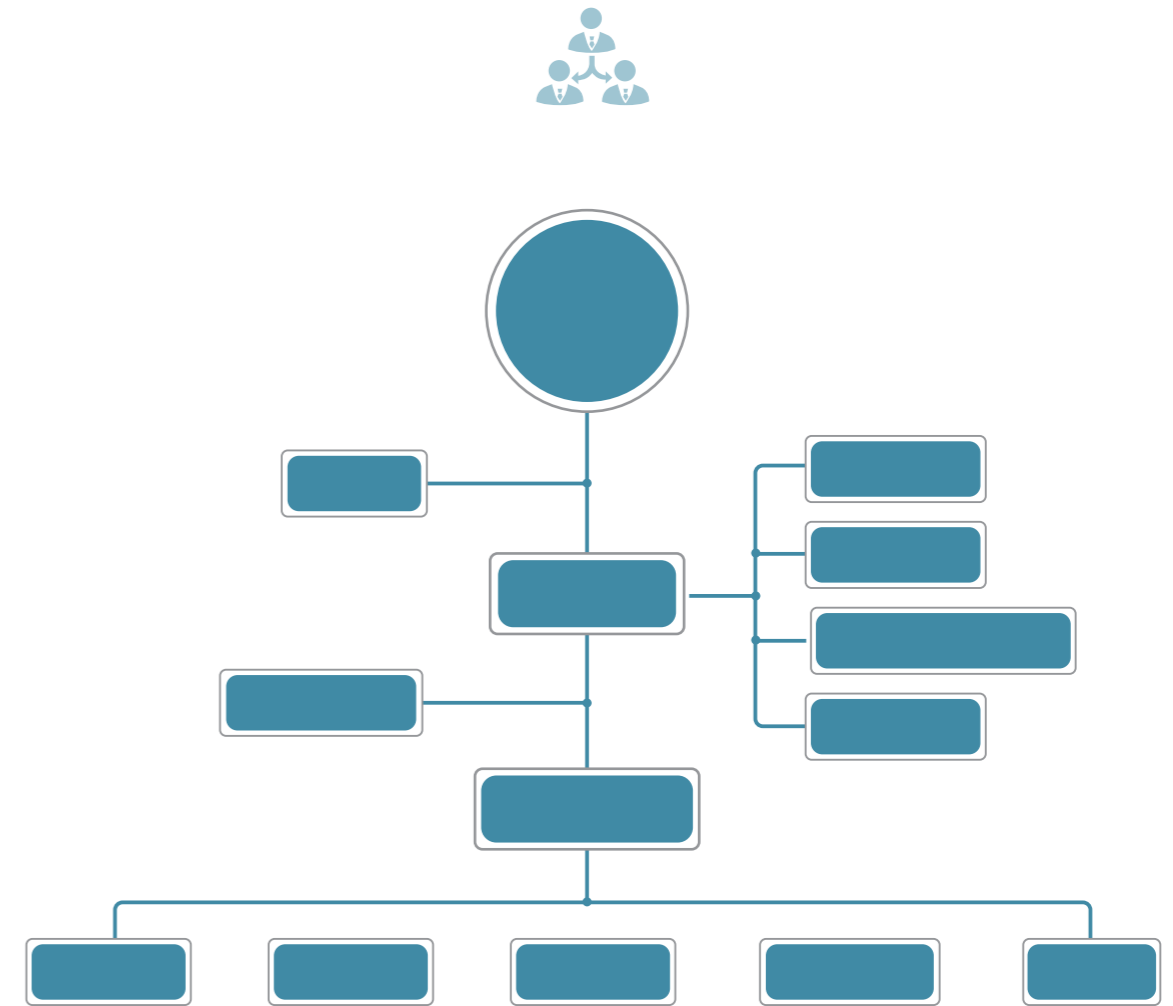
300068

72

822

1994 9

2010 4





15



CBI	ALABC	
EESA		
CNESA		
EPTC		
CDCC		



		3		
2021			2021	
2021				
2021				
" "				
	52		2021	
	31		2021	AAA "
		2021		
			"	"



ISO 9001 ISO 14001 ISO 45001 SA 8000 QC 080000 RBA

1996	12	ISO 9001
2000	7	ISO 14001
2004	9	
2006	12	
2006	12	QC 080000
2006	12	OHSAS18001
2008	3	TL9000
2009	2	SA 8000
2010	7	EICC
2011	7	ISO 14064
2012	1	
2016	3	TS16949
2017	11	ISO 50001
2017	12	IATF16949
2018	12	ISO 5060 1

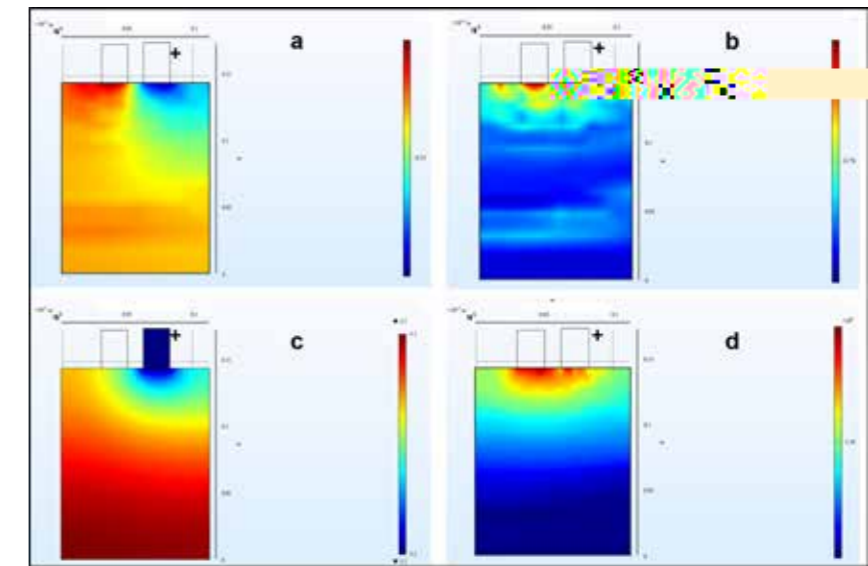
|

/





FE125 160Wh/kg 1C 0.5C
8000



2021 123 52 2021 138 14
2021 308 77 157

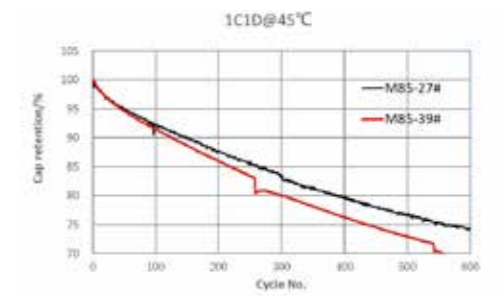
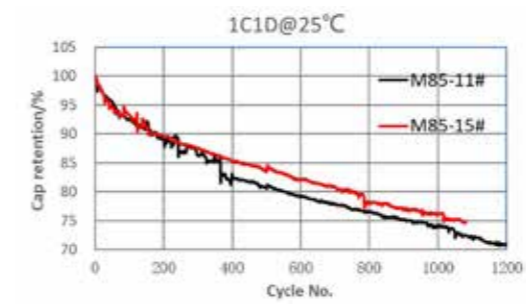


/

8 100%



2100 700 -10



25 45

Giess

18

" Herbert K. Giess

50



97%

50%

"

"

"

"

"

"

"

"

2021 7

Herbert K. Giess

v

"

2022

"

"

v

1989

Giess 1969

IEC/TC 21

IEC 60896-21/22 VRLA

IEC 61427

IEC 1906

"

"

2004 Giess

ALABC

IEC 61427-2:2015

IEC 63193:2020



" " 2021

2021 7

8

12



130MWh

" "



22

+

2021

22.5MW/45MWh

KC KBIA

KATS 2019

KC 62619

KC Korea Certification

chen

KBIA

KC

IEC/ISO

KBIA



KC KBIA

" "

50MW/32.44MWh

2020 5
Gorman

2021 11

16 40

" 2050 / "



16 40



APP

eCloud

eCloud

" " " "

24

App

eCloud

2%

2

99%

336.37GWh

9.6

19.5

1068

" 1 2 4"



2021



2010 12

100%

2021

ODCC

5G

68



5G

2022



2021

5 6

2035

950
2021 10

5.14

4400
10G Wh

3

2022



" ND- " 12NDG



EMOSS





2015-2018

" "

" " "

99% 2018 11

120

" "

" "

2021

3m³ " +

" " "

2.5

2010

2015

119.41

2020

319.51

48%,

80%



"

"



2025

2015 5

"

"

6

1	6- EVF - 100	2019	
2	G FM- 1000 RC	2020	
3	6- GFM- 180HR	2020	
4	12HTB200F	2021	
5	G FM- 1000E	2021	
6	REXC- 600	2021	

3

"

"

1		2017
2		2017
3		2017

7

1		2020
2		2021
3		2017

2021	DNV	ISO14001	"	"	2000	7	Perkin Elmer	ICP	2014	26	31	1	TSP	0.2 2021	24	CNAS
			2021	9												
									2019	5						
									2020	726						

2017 100%

10%

2021



22 370 " - - - - 7 - "

60%

2019 2020 2021

2021 7

2011 11 ISO14064 6

2021

2021

	CO ₂	CH ₄	N ₂ O	HFC _s	PFC _s	SF ₆	t-CO _{2e}
t-CO _{2e}	156462.71	18.83	2.73	0	0	0	156484.28
	99.99%	0.01%	0.00%	0	0	0	100%

2021

				t-CO _{2e}
t-CO _{2e}	378.15	81615.51	74490.63	156484.28
	0.24%	52.16%	47.60%	100%

2021 47.60%

99.76%

52.16%

0.5%

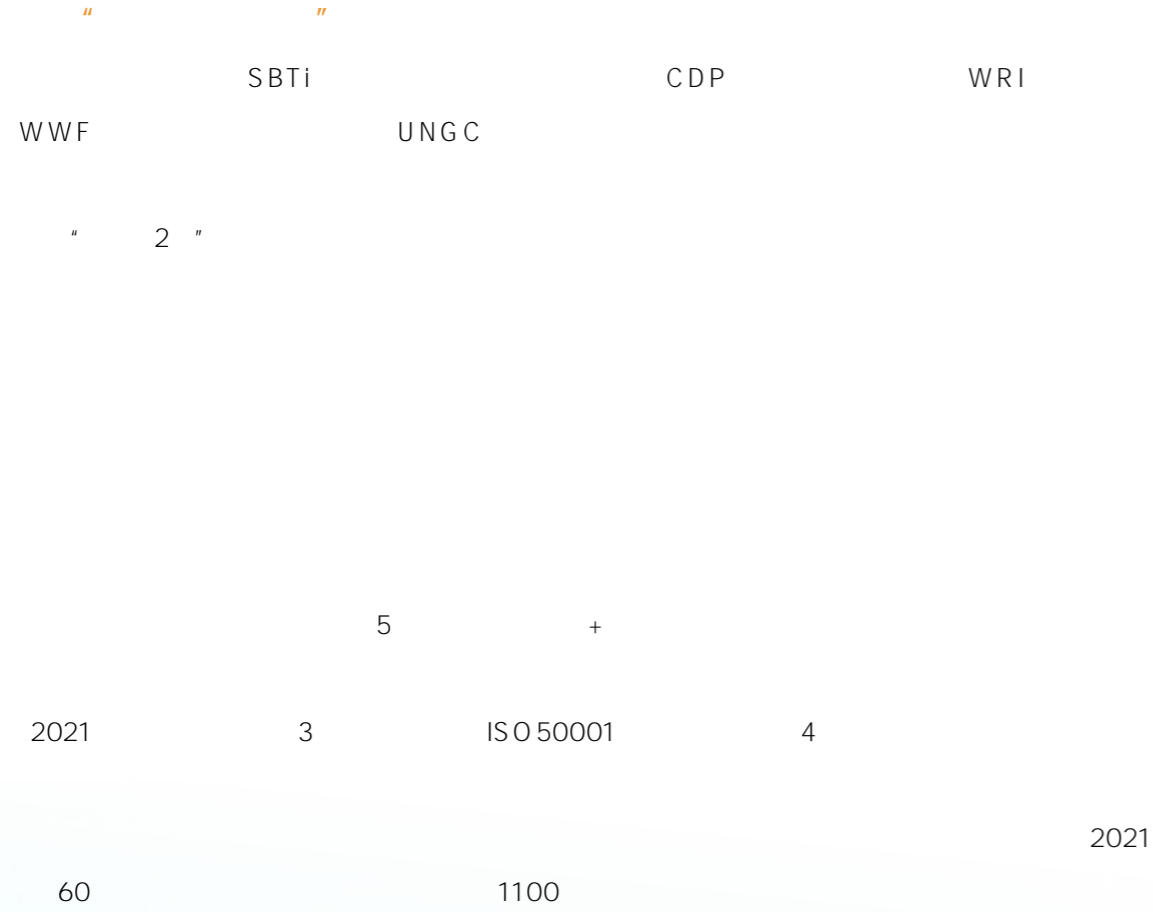
2008 QC080000

2-

GB/T26572 RoHS/REACH

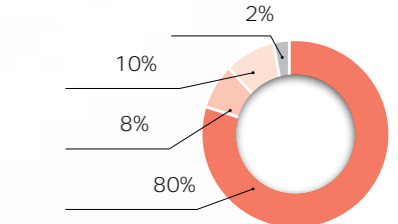
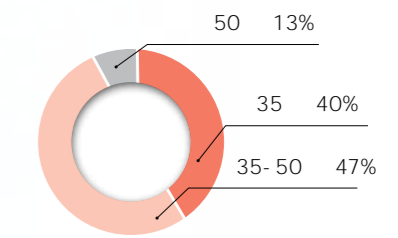
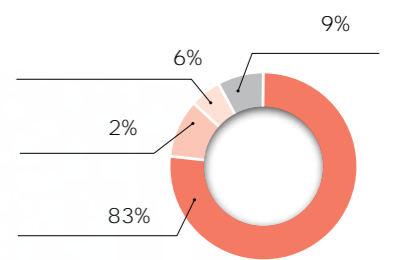
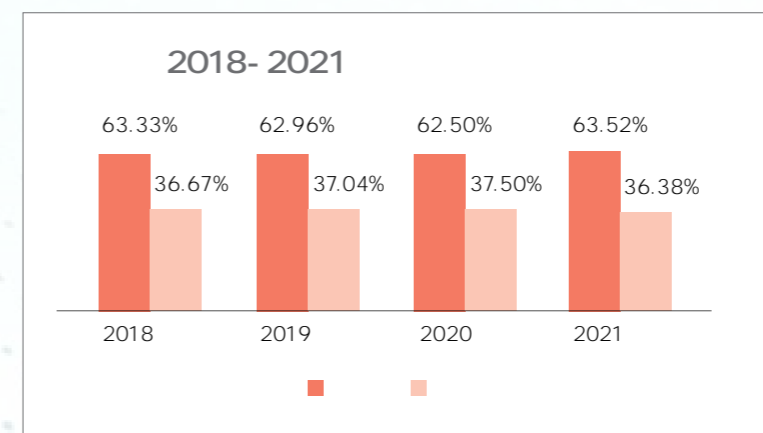
11 24 2011 2016

CDP Disclosure Project 9600 CDP 2019 CDP 1300 2018 CDP 2020 Carbon



2021	12	7861
23		38
36.38%	545	95
17.43%		

2021 17.43%





100%



60.93%

0A



2021

7.68

8.4%

2020

2021

8283.9

4.03%

5%

2021

2021

144

7.5

/



2021

2021





2021



2021 " " " "

2021 219

2021 40



2021 IT

24 932 172



" " ISO 45001



2021 8 ISO 45001 EHS EHS



2021 " " " 7 17



7764 14571 2021



G BZ188- 2014



500



CSR	Corporate - Social - Responsibility
ISO 9001	
ISO 14001	
OHSAS 18001/ISO 45001	
ISO 50001	
ISO 14064-1	-
SA 8000	
QC 080000	
EICC	Electronic Industry Code of Conduct
RBA	Responsible Business Alliance
RoHS	The Restriction of the use of Certain Hazardous Substances in Electrical and Electronic Equipment
1GWh=1000MWh=	gigawatt-hour megawatt-hour kilowatt-hour = kilovolt-ampere-hour
1GW=1000MW=1x10 ⁶ kW	gigawatt megawatt kilowatt
	1-35
	CH ₄ 6 CO ₂ PFCS N ₂ O HFCS SF ₆
	" "

GRI

	GRI	G4
	GRI102-45 GRI102-46 GRI102-49 GRI102-50 GRI102-51 GRI102-52 GRI102-53 GRI102-54	
	GRI102-14	
	GRI102-1 GRI102-2 GRI102-3 GRI102-4 GRI102-5 GRI102-6 GRI102-7 GRI102-13 GRI102-18	
	GRI102-15	
	GRI102-40 GRI102-41 GRI102-42 GRI102-43 GRI102-44	
	GRI102-16 GRI102-17	
	GRI416-1 GRI417-1	
	GRI416-1 GRI417-1	
	GRI416-1 GRI417-1	
	GRI416-1 GRI417-1	
	GRI416-1 GRI417-1	
	GRI307-1	
	GRI303-1 GRI303-2 GRI303-3 GRI303-4 GRI303-5	
	GRI305-1 GRI305-2 GRI305-4	
	GRI102-8 GRI401-1 GRI401-2 GRI404-1 GRI404-2 GRI404-3 GRI405-1 GRI405-2 GRI406-1 GRI407-1 GRI408-1 GRI409-1	
	GRI403-1 GRI403-3 GRI403-4 GRI403-5 GRI403-6 GRI403-10	
	GRI102-9 GRI414-1 GRI414-2	
	GRI413-1	



浙江南都电源动力股份有限公司
ZHEJIANG NARADA POWER SOURCE CO.,LTD.

822

310030

www.naradapower.com